

## Dairy

### Yoghurt & Probiotic Drinks



#### Customer Challenges

- Easy cleaning and maintenance and equipment with no bug traps where bacteria could breed
- Highest hygiene standards to protect their brand
- Yoghurt and probiotic drinks have a very high conductivity signal which can lead to false rejects using traditional inspection techniques
- Check for many forms of contamination also when packed in foil packaging
- Measuring fill levels of each pot even when on a tray with single or double layers

#### Solution Features & Advantages

- ▶ Hygienic design offers easy access to all machine areas and tool-less full conveyor belt removal in seconds - no bug traps. Sealing approved to IP65; IP69K is also available for harsher wash down environments. 3-A Sanitary Certification is optional.
- ▶ Complete product integrity check can be provided combining contamination detection with fill level checks in a single unit.
- ▶ X-ray inspection systems are not effected by the conductivity of yoghurt and probiotic drinks.

#### Customer Benefits

- ▶ Efficient and easy cleaning and maintenance reducing downtime.
- ▶ Ensuring continual brand protection and customer satisfaction and that the highest possible quality standards are met.
- ▶ Therefore sensitivity is optimised and production throughputs are maximised.

#### Suitable x-ray inspection systems for yoghurt:



AdvanCheK  
AdvanCheK Plus



InspireX R20



InspireX R40



InspireX R70

**METTLER TOLEDO**



# Dairy Applications - Safeline X-ray Inspection Systems

	AdvanCheK	AdvanCheK Plus	InspireX R20	InspireX R20H	InspireX R40	InspireX R70	CanCheK
<b>Butter, Margarine</b>	small retail packs	small retail packs	small retail packs		large blocks	pumped products	
<b>Ice Cream</b>	lollies, cones, small tubs, choc ices	lollies, cones, small tubs, choc ices	lollies, cones, small tubs, choc ices		multi packs, large tubs 2L	pumped products	
<b>Cheese</b>	small retail packs, grated cheese, cream cheese	small retail packs, grated cheese, cream cheese	small retail packs, grated cheese, cream cheese		large blocks (e.g. 20kg), vacuum packed grated cheese (e.g. 10kg), discs-fixed weight	pumped products	
<b>Milk</b>				plastic bottles, tetra paks		pumped products	
<b>Milk Powder</b>	sachets	sachets	sachets	composite can	big foil bags, multiple packs in a carton		composite cans
<b>Yoghurt</b>	small retail packs	small retail packs	small retail packs	big pots up to 500ml, probiotic drinks	trays of yoghurt (single or double layers) or for twin lanes of retail packs	pumped products	

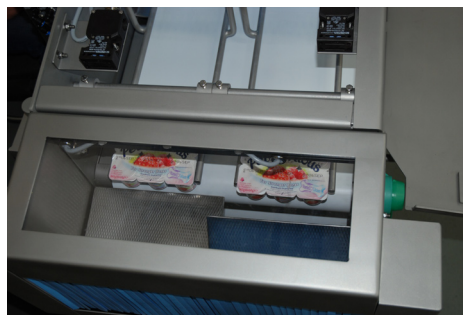
## InspireX R40

For Conveyorised Products

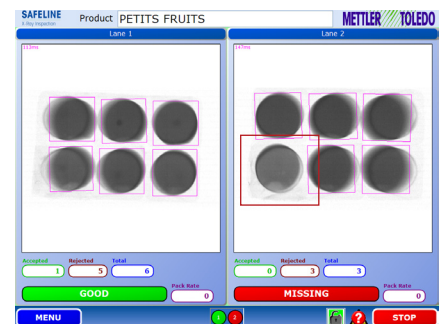
- The InspireX R40 is ideal for larger packages and products e.g. trays of yoghurt in counts of 12 or 24 pots in single or double layers
- A range of inspection widths from 400mm to 800mm are available, suitable for single or multiple lane inspection, in a variety of configurations with a choice of reject mechanisms to suit individual applications.
- Reference Project - A French yoghurt manufacturer using an InspireX R40-400 with a twin lane conveyor system which can inspect two production lines simultaneously (two packs of 6 pots) - Each pot is inspected in the tray for contaminations such as glass, metal and high density plastic, fill levels are checked and each pack is scanned for damaged or missing items to ensure brand integrity.



InspireX R40-400



InspireX R40-400  
Showing twin lane conveyor system  
with dual flap reject system



X-ray image from an InspireX R40 twin lane,  
Showing two retail packs, each 6 pots of yoghurt,  
With one low fill in one pot

### Mettler-Toledo Safeline X-ray Ltd.

Greenfield,  
Royston Business Park  
Royston, Hertfordshire,  
SG85HN UK

Tel: +44(0)1763 257900

Fax: +44(0)1763 257909

Email: xraysales@mt.com

[www.mt.com/safeline-xray](http://www.mt.com/safeline-xray)

For more information

Subject to technical changes

© 2008 Mettler-Toledo Safeline Ltd.

Printed in UK